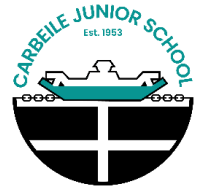


CARBEILE JUNIOR SCHOOL

ASTHMA POLICY



TJC – JAN 2026

The school:

- Recognises that asthma is a widespread, serious but controllable condition and the school welcomes all pupils with asthma.
- Ensures that pupils with asthma can and do participate fully in all aspects of school life, including art, PE, science, educational visits and out of hours activities.
- Recognises that pupils with asthma need immediate access to reliever inhalers at all times. All inhalers will be kept in a red bag in the pupil's own classroom.
- Keeps a record of all pupils with asthma and the medicines they take.
- Endeavours that the whole school environment, including the physical, social, sporting and educational environment, is favourable to pupils with asthma.
- Ensures that all staff (including supply teachers and support staff) who have pupils with asthma in their care, know who those pupils are and know the school's procedure to follow in the event of an asthma attack.

Parents have a responsibility to:

- Tell the school if their child has asthma. An asthma form has to be completed.
- Ensure the school has been informed about the medicines their child requires during school hours.
- Ensure the school has been informed about the medicines their child requires while taking part in visits, field trips and activities such as sports.
- Tell the school if there have been any changes to the child's condition and/or medication.
- **Ensure their child has a named inhaler in school at all times.**
- Ensure that their child's inhaler is in date and working.
- Regularly review their child's condition with their doctor.

Asthma medicines

Immediate access to reliever medicines is essential. Pupils with asthma are encouraged to manage their reliever inhaler as soon as the parent/carer, doctor/asthma nurse and class teacher agree they are mature enough. All inhalers must be in date and labelled with the child's name and kept in the red bag in their own classroom.

If a parent/carer has stated that their child requires an inhaler in school but does not supply an **in-date inhaler**, the school will phone the parent/carer and request that an inhaler is brought into school without delay; the phone call will be logged. If the parent/carer fails to supply the inhaler as requested, in the event of an emergency staff will be reliant on calling 999 and awaiting the Emergency Services unless signed authority has been given to administer the emergency asthma pump held in school. Inhalers will be taken on all off-site activities, trips & visits. An emergency inhaler will be available for children who do not have their own if the school has received a signed authority.

School staff who agree to administer medicines are insured by the local authority when acting in agreement with this policy. All school staff will facilitate pupils to take their medicines when they need to.

Inhalers that are provided by parents/carers for children not on the asthma register, will be kept in the office and administered and recorded by staff like any other medication. Children are sometimes not included on the asthma register because they are being monitored by the GP prior to diagnosis or the child might just suffer from a seasonal wheeze but is not asthmatic.

Record Keeping

When a child joins the school, parents/carers are asked to declare any medical conditions (including asthma) that require care within school, for the school's records. At the beginning of each school year, parents are requested to update details about medical conditions (including asthma) and emergency contact numbers. A copy of the form is attached.

All parents/carers of children with asthma are given an asthma information form to complete and return to school. From this information the school keeps its asthma records. All teachers know which children in their class have asthma. Parents are required to update the school about any change in their child's medication or treatment.

Exercise and activity - PE and Games

All children are encouraged to participate fully in all aspects of school life including PE. Children are encouraged/reminded to use their inhalers before exercise (if instructed by the parent/carer on the asthma form) and during exercise if needed. Staff are aware of the importance of thorough warm up and down. Children are not forced to take part if they feel unwell but will be encouraged to fulfil an observer role for example; coaching or refereeing. If a child is unwell and there is no inhaler they will be withdrawn from a lesson and referred to First Aid at Reception for observation and the parent/carer contacted. See above regarding the use of emergency inhalers.

School Environment

The school endeavours to ensure that the school environment is favourable to pupils with asthma. The school will take into consideration, any particular triggers to an asthma attack that an individual may have and will seek to minimise the possibility of exposure to these triggers.

Asthma Attacks – School's Procedure

In the event of an asthma attack, staff will follow the school procedure:

- Encourage the pupil to use their inhaler, under supervision.
- If a child does not have an inhaler in school the school's own emergency salbutamol kit will be used. **This will only be used during an emergency and if written consent has been received from the parent/carer.**

- Summon a first aider who will bring the pupil's Asthma Information Form and will ensure that the inhaler is used according to the dosage on the form.
- If the pupil's condition does not improve or worsens, the First Aider will follow the emergency asthma treatment procedures as recommended by Asthma UK. A copy of the procedure is attached.
- The First Aider will call for an ambulance if there is no improvement in the pupil's condition.
- If there is any doubt about a pupil's condition an ambulance will be called.

Policy Review

We will review this policy every three years unless earlier revision is required. These documents will be stored as a paper document and electronically by the H&S Officer. The policy is also on the school website.

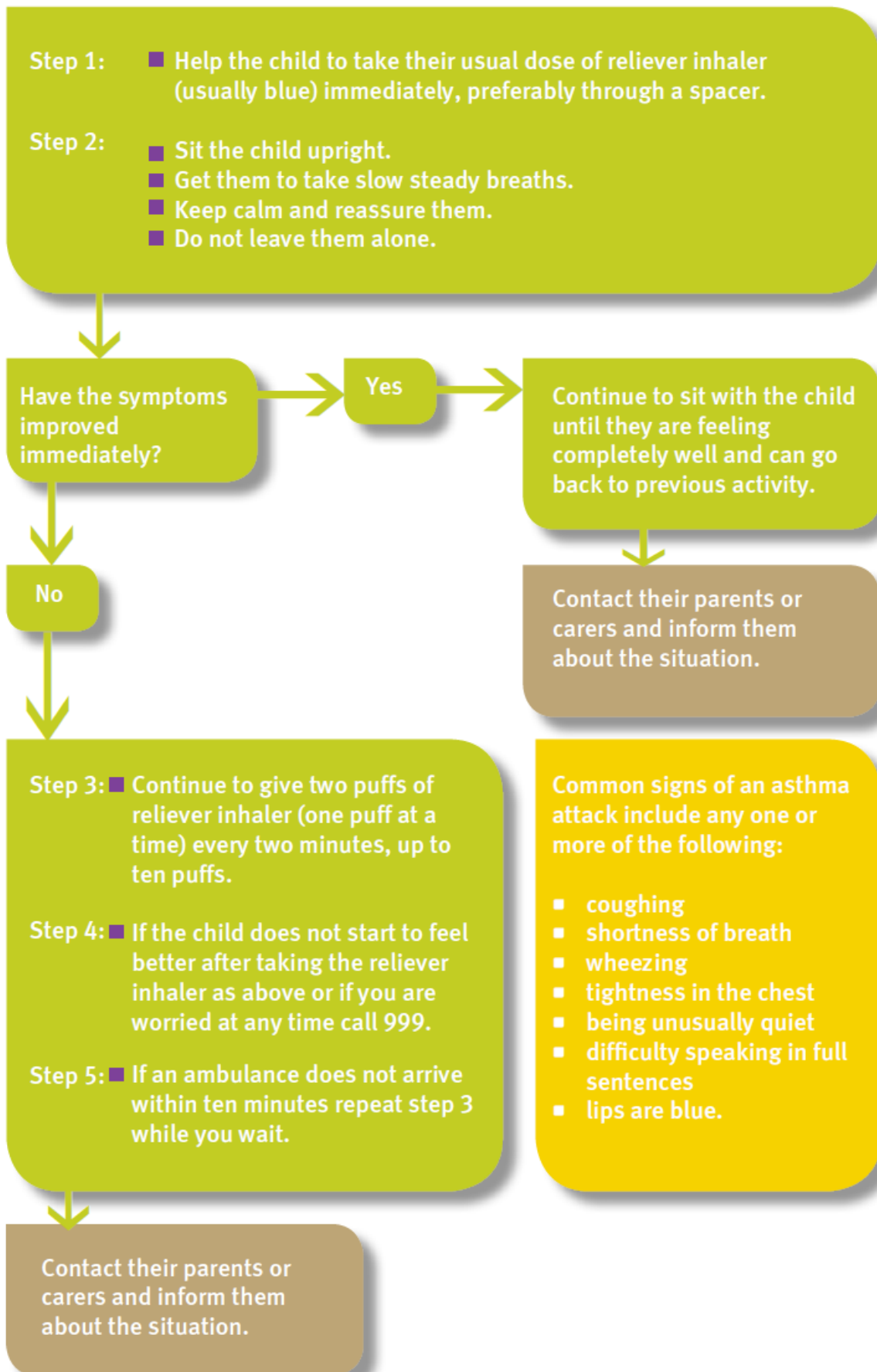
Next review: Spring 2029

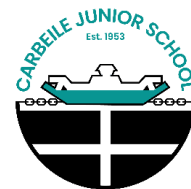
Signed Headteacher: Mr P Hamlyn

H&S Officer: Mrs T J Cullerton

Date: 7th January 2026

How to deal with an asthma attack





CARBEILE JUNIOR SCHOOL

Parent/Carer

Asthma Information Form

Please complete the questions below so that the school has the necessary information about your child's asthma. **Please return this form without delay.**

CHILD'S NAME:.....

AGE: CLASS:.....

EMERGENCY CONTACT TELEPHONE NUMBERS:

.....

DOCTOR'S NAME:

SURGERY: TEL NO:.....

1. Does your child have an inhaler in school? Yes/No

If not, why not? (If they no longer suffer from asthma please complete the last section of this form)

.....

2. Please provide information on your child's current treatment. (Include the name, type of inhaler, the dose and how many puffs? Do they have a spacer?).

.....

.....

3. What triggers your child's asthma?

.....

4. Has your child ever been hospitalised as a result of asthma? Yes/No

If yes please provide details:.....

.....

When was your child's most recent asthma review with their GP?.....

Circle the appropriate statements

- My child requires an inhaler and I have provided this (named and in date)
- My child does require a spacer and I have provided this (named)

You may wish to provide a spare inhaler in school if your child uses their reliever regularly. Spare inhalers may be required in the event that the first inhaler runs out, is lost or forgotten. Inhalers must be clearly labelled with your child's name and replaced before they reach their expiry date.

5. Does your child need a blue inhaler before doing exercise/PE? Yes/No

If so, how many puffs?.....

6. Do you give consent for the following treatment to be given to your child as recognised by Asthma UK in an emergency? (Copied attached) **YES/NO***

1. Help the child to take their usual dose of reliever inhaler (usually blue) immediately, preferable through a spacer.
2. Sit the child upright and encourage them to take slow steady breaths whilst keeping them calm and reassuring them.
3. If the symptoms have not improved continue to give two puffs of the reliever inhaler (one puff at a time) every two minutes, up to ten puffs.
4. **If their symptoms are not relieved with 10 puffs of blue inhaler then this should be viewed as a serious attack:**
5. **CALL AN AMBULANCE and CALL PARENT**
6. **If an ambulance does not arrive within ten minutes repeat step 3 while you wait.**

7. Do you give consent for the school's emergency salbutamol inhaler to be administered as above in the event of an emergency if your own child's inhaler cannot be located/used? **Yes/No***

If written consent to use the emergency inhaler is not given the school will not administer it in an emergency.

I agree to ensure that my child has in-date inhalers and a spacer (if prescribed) in school. I have read and understood the asthma policy and emergency asthma procedures. I will inform the school if there are any changes in my child's treatment or condition.

Signed:.....

Name:..... Date.....

I am the person with parental responsibility

Parental Update (only to be completed if your child no longer has asthma)

My child (name)..... no longer has asthma and therefore no longer requires an inhaler in school or on school trips and visits. Please remove him/her from the school asthma register.

Signed :.....

Name:..... Date.....