

Animals, including humans Test 3 (end of topic)

Name: _____ Class: _____ Date: _____

1. a) Write the name of one more food in each group.

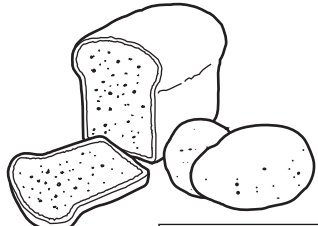
bread	meat	chocolate
potatoes	sausages
.....

KU

 2 marks

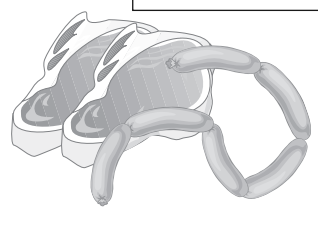
b) Join each group to a box to show if it is food for activity or food for growth.

bread



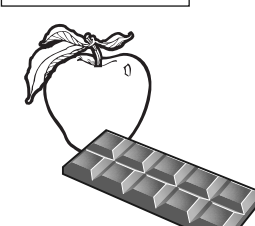
potatoes

meat



sausages

apple



chocolate

food for growth

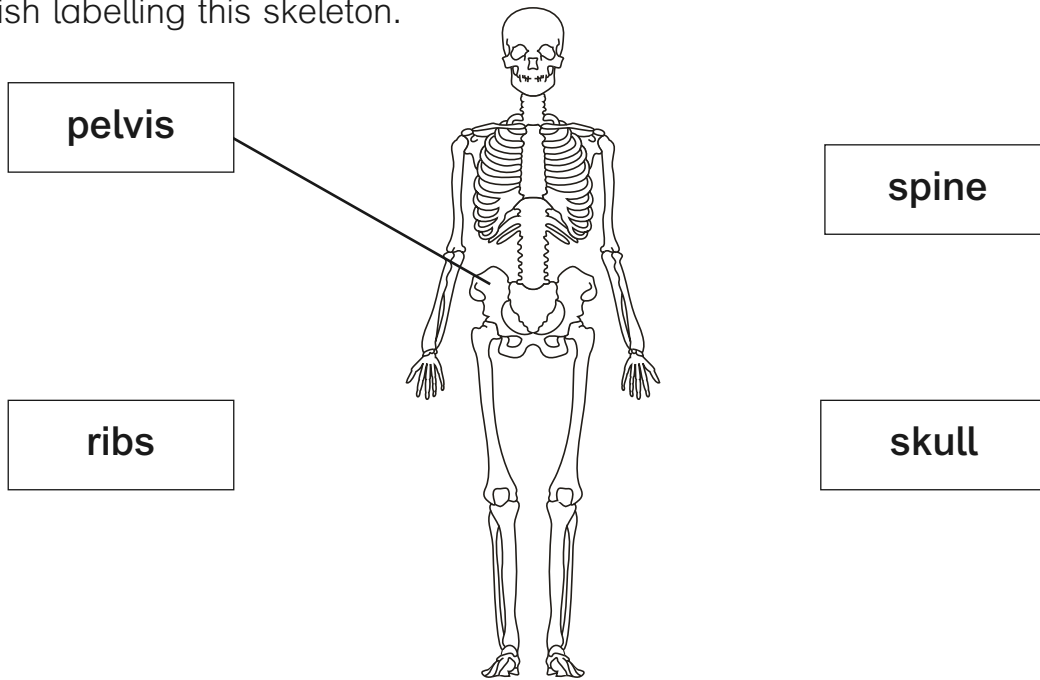
food for activity

A

 1 mark

Total for this page

2. Finish labelling this skeleton.



KU

 3 marks

3. a) How could you record the different hand spans in your class?

.....

.....

AWS

 1 mark

b) What equipment could you use?

.....

AWS

 1 mark

4. a) Katie measured the length of her lower arm and her leg when she was six. When she became ten she measured her lower arm again. The results are in the table. If she had measured her leg again what length do you think it might have been? Put your estimate in the table.

Bone	Length age 6	Length age 10
lower arm	12 cm	18 cm
leg	50 cm cm

AWS

 1 mark

b) Give a reason for your answer.

.....

.....

AWS

 1 mark

Total for this test